

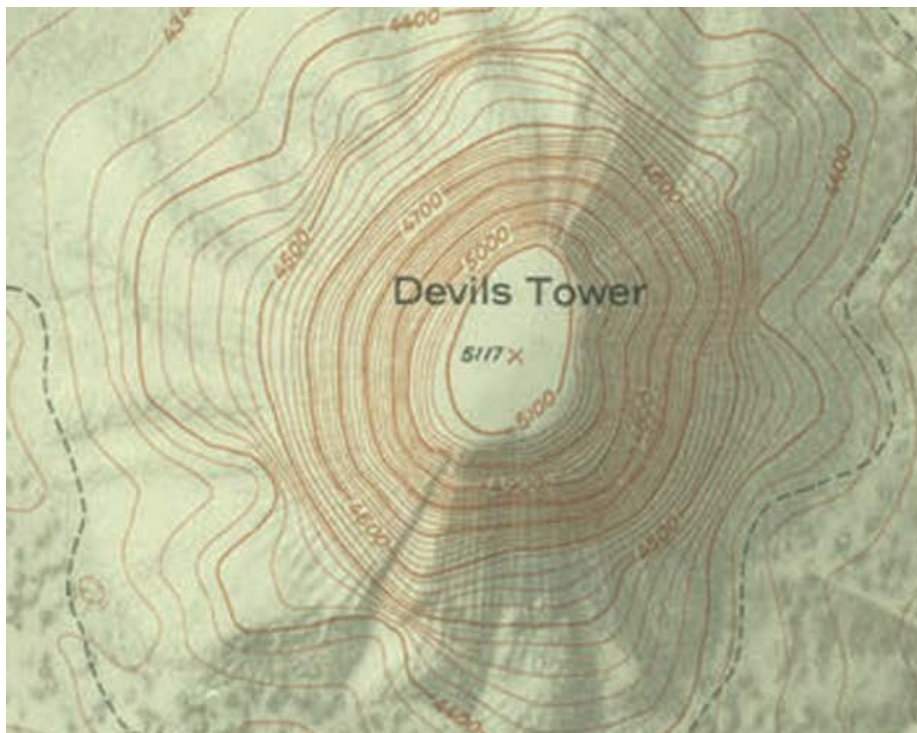
Name: \_\_\_\_\_ Date & Time of Practical: \_\_\_\_\_.

Student Number: \_\_\_\_\_ Name of your TA1: \_\_\_\_\_.

## Pre-Practical Question Sheet 4

**Instructions:** Please print this page, fill out brief answers to the questions below, and turn in the sheet to the box at the front when you arrive to Practicals this week. (Alternatively, you may write out the answers on a blank piece of paper. In this case, be sure to put your name, date & time of Practical at the top, and clearly number each question you are answering.)

1. In the topographic map below, where is the land steepest? Where is it most level?



2. What is the relationship between electrical potential (voltage) and electric field?
3. If a positive charge is located half-way between an electrode at  $-10\text{ V}$  and an electrode at  $+10\text{ V}$ , in which direction would it accelerate?
4. If a positive charge is located half-way between an electrode at  $+10\text{ V}$  and an electrode at  $+10\text{ V}$ , in which direction would it accelerate?

Mark out of 2: