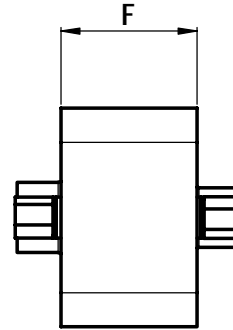
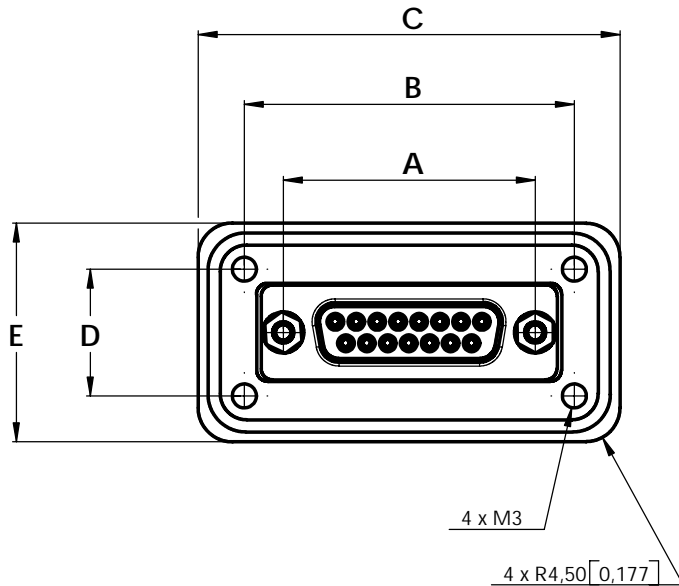


THIS DRAWING CONTAINS INFORMATION PROPRIETARY TO POSITRONIC IND. S.A.S. ANY REPRODUCTION, DISCLOSURE OR USE OF THIS DRAWING IS EXPRESSLY PROHIBITED, EXCEPT AS POSITRONIC IND. S.A.S. MAY OTHERWISE AGREE IN WRITING.

DATE	REV	REVISION RECORD	APP	DR	CK
16/05/05	A	ECO/CH 1156	Y.P.		
25/05/05	B	ECO/CH 1162	Y.P.		



## NORMAL AND HIGH DENSITY

STEP	1	2	3	4	5	6
	XAVAC	15	M/F	G	.0	
<b>STEP 1 - BASIC SERIES</b> XAVAC SERIES						<b>STEP 6 - SPECIAL OPTIONS</b> Consult Sales Department
<b>STEP 2 - CONNECTOR VARIANTS</b> Number of contacts, Normal density 9-15-25-37-50 Number of contacts, High density 15-26-44-62-78-104						<b>STEP 5 - TYPE OF CONTACTS</b> 0 : Normal density 1 : High density  5* : Thermocouple contact (only normal density)*
<b>STEP 3 - CONNECTOR GENDER</b> M/F : Male/Female MM : Male/Male F/F : Female/Female Not available for high density/mixed combinations						<b>STEP 4 - TYPE OF APPLICATIONS</b> G : Gold for Space version D : Gold and Dimpled for Space version S : Stainless-steel for Space version Residual magnetism from 20 to 2000 Gamma I : Stainless-steel for Industrial version

### NOTES :

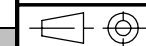
- Materials and Finishes :
  - INSULATOR : - Glass-filled DAP per ASTM-D-5948 for normal density.  
- Polyester glass-filled per MIL-M-1124 for high density and mixed combinations.
  - CONTACTS : 1,25 gold over copper plate.
  - SHELLS : Bras with 1,25 microns gold over copper plate or stainless steel.
  - HOUSING : Aluminium alloy , gold iridite.
  - O-RING : Viton (fluoro carbone) Other material per request.
- Connector size 15 normal density shown for reference only.
- Dimensions are in millimetres [inches].
- For performance characteristics refer to hermetic catalog.

\* . See consult sales department for thermocouple materials

	Normal density	High density	A	B	C	D	E	F (Type of cotacts)
								Type 0-1
<b>CONNECTOR SIZE 1</b>	9	15	24,99 [0,9838]	34,29 [1,350]	46,37 [1,8255]	16,00 [0,6299]	28,08 [1,1055]	18,00 [0,7086]
<b>CONNECTOR SIZE 2</b>	15	26	33,32 [1,3118]	43,64 [1,7181]	55,79 [2,1964]	16,76 [0,6598]	28,92 [1,1385]	18,00 [0,7086]
<b>CONNECTOR SIZE 3</b>	25	44	47,04 [1,8519]	56,36 [2,2188]	67,42 [2,6543]	16,02 [0,6307]	27,08 [1,0661]	18,00 [0,7086]
<b>CONNECTOR SIZE 4</b>	37	62	63,50 [2,500]	73,46 [2,8921]	85,38 [3,3614]	16,90 [0,6653]	28,82 [1,1346]	18,00 [0,7086]
<b>CONNECTOR SIZE 5</b>	50	78	61,11 [2,4059]	71,28 [2,8062]	82,99 [3,2673]	19,68 [0,7748]	31,40 [1,2362]	18,00 [0,7086]
<b>CONNECTOR SIZE 6</b>		104	63,50 [2,500]	73,26 [2,8842]	84,38 [3,322]	20,88 [0,822]	32,00 [1,2598]	18,00 [0,7086]



**POSITRONIC INDUSTRIES S.A.S.**



DECIMAL TOL.

± 0,38

GENERAL ROUGHNESS

/

ANGULAR TOL.

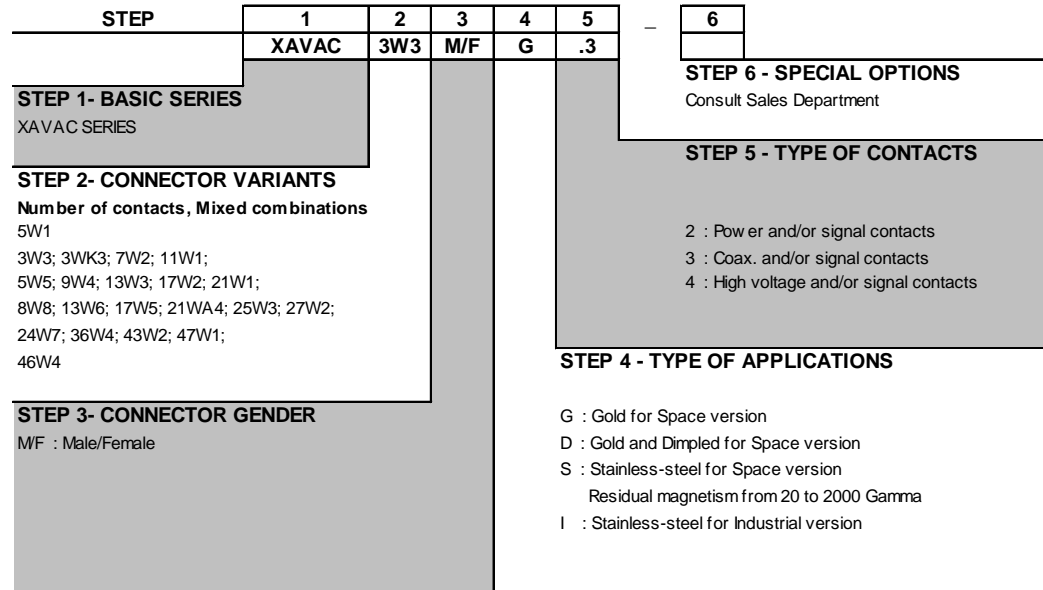
± /

SCALE	DRAWN BY	Y. PEZZO
N.T.S.	APPROVED BY	
TITLE		
XAVAC SERIES		
DATE	DRAWING NUMBER	REV.
29/03/05	PSK 1299	B
1 of 2		

THIS DRAWING CONTAINS INFORMATION PROPRIETARY TO POSITRONIC IND. S.A.S. ANY REPRODUCTION, DISCLOSURE OR USE OF THIS DRAWING IS EXPRESSLY PROHIBITED, EXCEPT AS POSITRONIC IND. S.A.S. MAY OTHERWISE AGREE IN WRITING.

# MIXED COMBINATIONS

SIZE 20 SIGNAL CONTACTS AND SIZE 8 POWER OR COAX OR HIGH VOLTAGE CONTACTS



	Mixed combinations	A	B	C	D	E	F
							(Type of cotacts)
		Type 2-3-4					
<b>CONNECTOR SIZE 1</b>	5W1	24,99 [0,9838]	34,29 [1,350]	46,37 [1,8255]	16,00 [0,6299]	28,08 [1,1055]	24,00 [0,9448]
<b>CONNECTOR SIZE 2</b>	3W3 ;3WK3; 7W2 ;11W1	33,32 [1,3118]	43,64 [1,7181]	55,79 [2,1964]	16,76 [0,6598]	28,92 [1,1385]	24,00 [0,9448]
<b>CONNECTOR SIZE 3</b>	5W5 ;9W4 ;13W3 ; 17W2 ; 21W1	47,04 [1,8519]	56,36 [2,2188]	67,42 [2,6543]	16,02 [0,6307]	27,08 [1,0661]	24,00 [0,9448]
<b>CONNECTOR SIZE 4</b>	8W8; 13W6; 17W5; 21WA4;25W3;27W2	63,50 [2,500]	73,46 [2,8921]	85,38 [3,3614]	16,90 [0,6653]	28,82 [1,1346]	24,00 [0,9448]
<b>CONNECTOR SIZE 5</b>	24W7 ; 36W4 ; 43W2 ; 47W1	61,11 [2,4059]	71,28 [2,8062]	82,99 [3,2673]	19,68 [0,7748]	31,40 [1,2362]	24,00 [0,9448]
<b>CONNECTOR SIZE 6</b>	46W4	63,50 [2,500]	73,26 [2,8842]	84,38 [3,322]	20,88 [0,822]	32,00 [1,2598]	24,00 [0,9448]

DRAWING NUMBER	PSK 1299	REV.	B
		2 of 2	