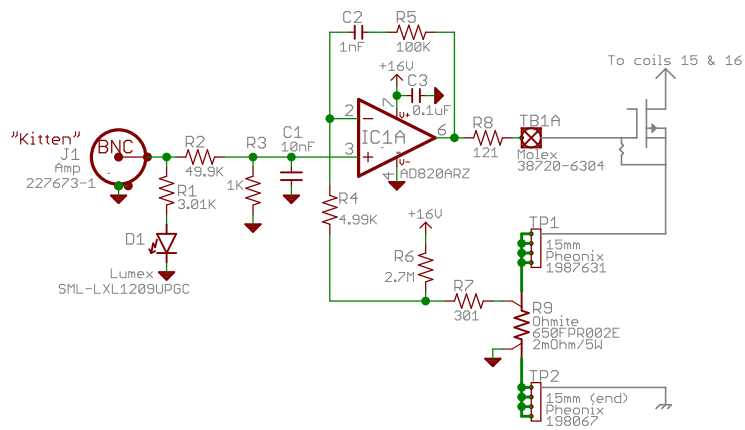
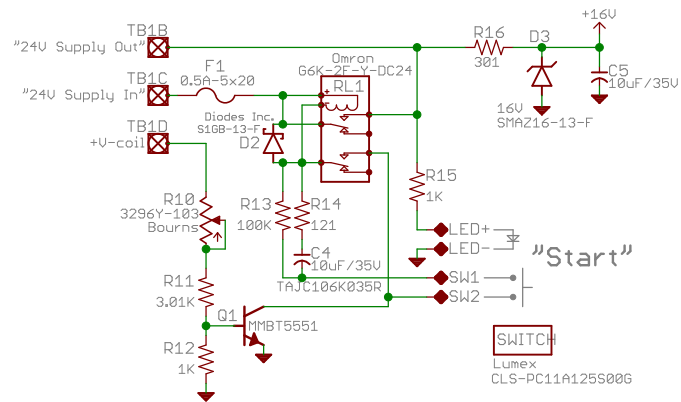


## Voltage to Current Sink



## Undervoltage Protection



### Notes

WARNING!  $V_{coil} \geq +7.0V$  (or will draw max current!)  
 Current:  $I = (V_{ctrl} - 0.1V) * 10$  (or  $10A/V$ )  
 where  $V_{ctrl}$  is +10V max, deadband +100mV  
 Measured +24V with no FETs turned on: 140mA, higher inrush.

### BOM

Standoffs: Keystone 24395  
 Light pipes: Bivar PLP2-500

A1	Oct'08	A.Stummer	Original schematic for original PCB.
Ltr	Date	By	Description
REVISIONS			
University of Toronto Quantum Optics Group			CATS - Kitten Cold Atoms Transfer System Thywissen Lab
Drawn: A.Stummer Oct'08		Edited: 12/12/2008 10:19:44	
Sheet: 1/1			REV: A1