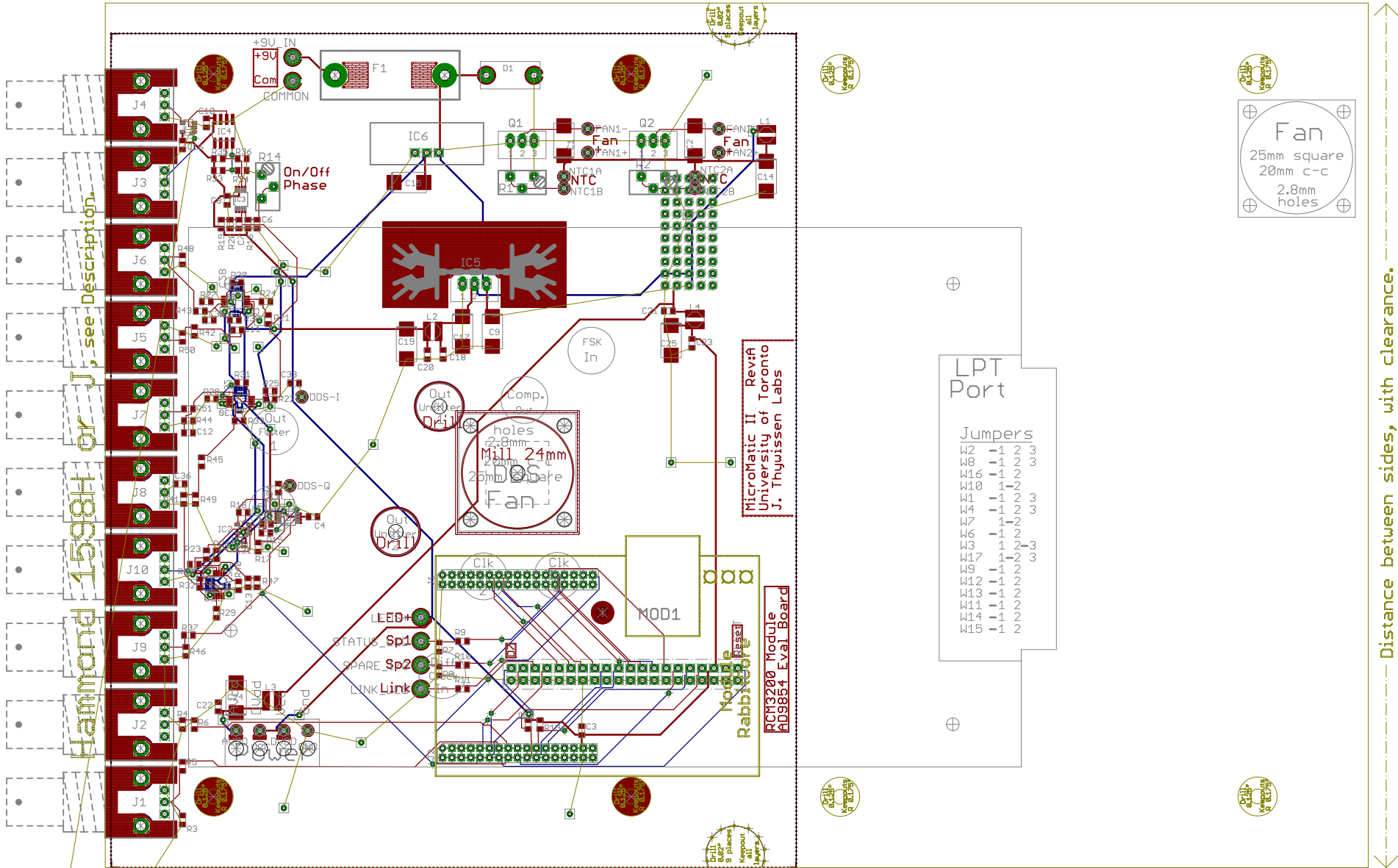


← Distance between faceplates, ZERO CLEARANCE. →



Distance between sides, with clearance.

Cover posts, inc clearance, 2 places.

PCB mtg, drill 3.2mm (0.125"), 8 places.

| | | | |
|---|--------------|------------------------------|--|
| University of Toronto Quantum Optics Group | | "PhaseoMatic 2" RF Source | |
| Drawn: A. Stummer, March '08 | | Edited: 20/02/2013 10:40:14 | |
| File: PhaseoMatic | | Rev: A2 | |
| Trace: 0.007" | Power: 0.02" | Space: 0.007" | |
| Autorouter Grid: 0.005" | | Placement Grid: 0.025" | |
| Notes: Standard DRC rules. Rev:A2 is Rev:A PCB with changes for next spin (Rev:B). | | | |

To Do:

- Move DDS power connections - cutout?
- Move +3.3V POL SMPS nearer to DDS and Rabbit - horizontal under RJ45?
- Much fatter trace for +3.3V to DDS and Rabbit.