

Connectorized Amplifier

ZX60-8008E+

50Ω 20 MHz to 8 GHz

Features

- Wide bandwidth, 20 MHz to 8 GHz
- Good IP3, 24 dBm typ.
- Excellent repeatability
- Protected by US patent 6,790,049

Applications

- Buffer amplifier
- Cellular
- PCS
- Lab
- Instrumentation
- Test equipment



CASE STYLE: GC957

Connectors	Model	Price	Qty.
SMA	ZX60-8008E-S+	\$49.95 ea.	(1-9)

+ RoHS compliant in accordance with EU Directive (2002/95/EC)

The +suffix has been added in order to identify RoHS Compliance. See our web site for RoHS Compliance methodologies and qualifications.

Electrical Specifications at T_{AMB} = 25°C

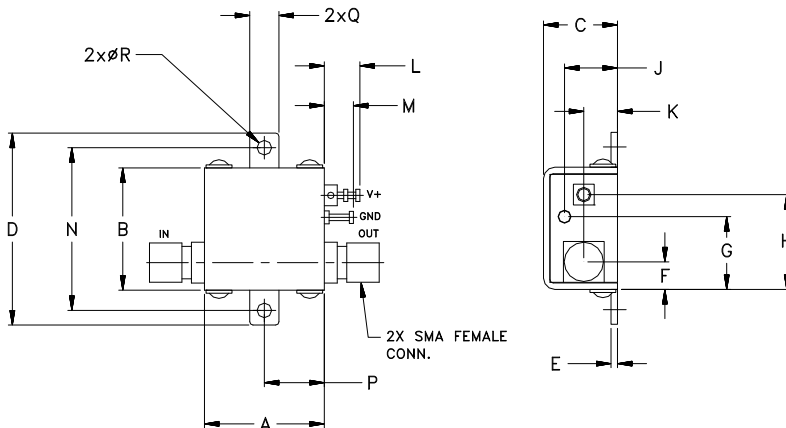
MODEL NO.	FREQ. (GHz) f _L -f _U	DC VOLTAGE @ Pin V+ (V)	GAIN over frequency in GHz Typ (dB)								MAXIMUM POWER (dBm) Output (1 dB Comp.) Typ. f _L f _U		DYNAMIC RANGE NF (dB) Typ. IP3 (dBm) Typ.		VSWR (:1) Typ.				ACTIVE DIRECTIVITY (dB) Isolation-Gain Typ.		DC OPERATING CURRENT @ Pin V+ (mA) Typ. Max.	
			0.1	1.0	2.0	3.0	4.0	5.0	6.0	8.0	Min.at 2 GHz	8.4	10.8	6.6	4.1	24	f _L -3 GHz	3-f _U GHz	f _L -3 GHz	3-f _U GHz	6 - 11	39
ZX60-8008E+	0.02-8	12.0	11.5	11.1	10.4	9.9	9.0	9.0	8.5	7.0	8.4	10.8	6.6	4.1	24	1.3	1.5	1.6	1.9	6 - 11	39	50

Maximum Ratings

Operating Temperature	-45°C to 80°C case
Storage Temperature	-55°C to 100°C
DC Voltage	12.5V
Input Power(no Damage)	15dBm
Power	650mW

Permanent damage may occur if any of these limits are exceeded.

Outline Drawing



Outline Dimensions (inch/mm)

A	B	C	D	E	F	G	H	J	K	L	M	N	P	Q	R	WT. GRAM
.74	.75	.46	1.18	.04	.17	.45	.59	.33	.21	.22	.18	1.00	.37	.18	.106	23.0
18.80	19.05	11.68	29.97	1.02	4.32	11.43	14.99	8.38	5.33	5.59	4.57	25.40	9.40	4.57	2.69	



For detailed performance specs & shopping online see web site

P.O. Box 350166, Brooklyn, New York 11235-0003 (718) 934-4500 Fax (718) 332-4661 The Design Engineers Search Engine Provides ACTUAL Data Instantly at minicircuits.com

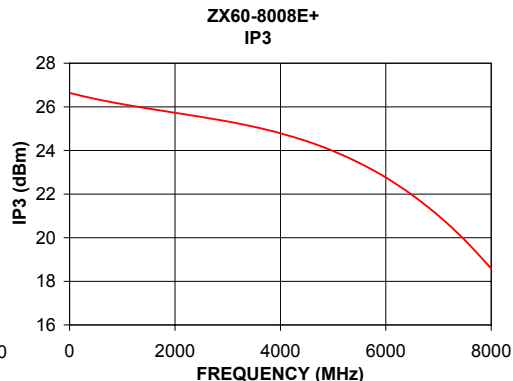
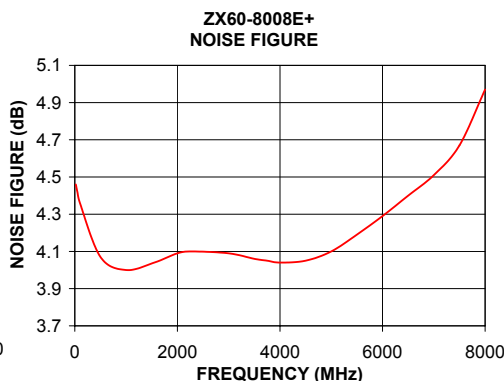
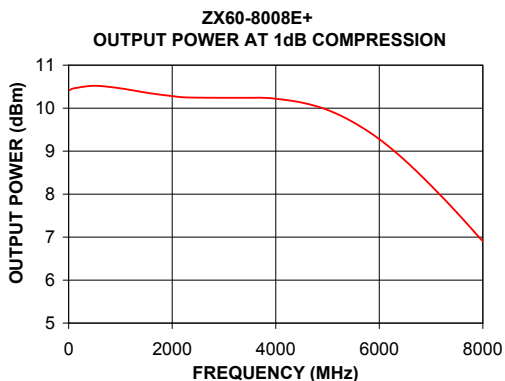
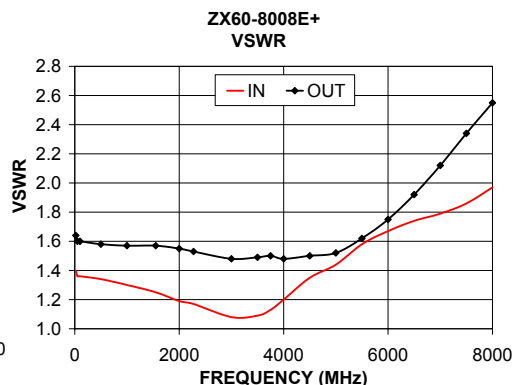
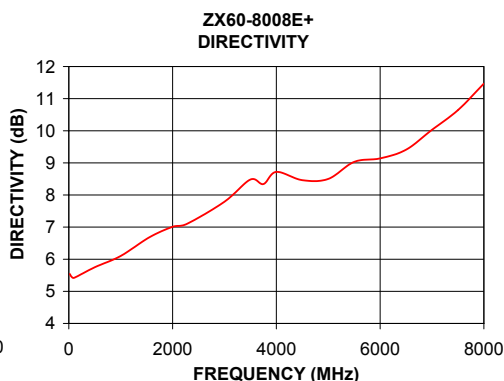
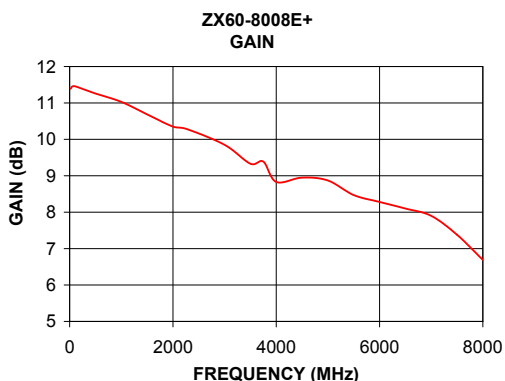
Notes: 1. Performance and quality attributes and conditions not expressly stated in this specification sheet are intended to be excluded and do not form a part of this specification sheet. 2. Electrical specifications and performance data contained herein are based on Mini-Circuit's applicable established test performance criteria and measurement instructions. 3. The parts covered by this specification sheet are subject to Mini-Circuit's standard limited warranty and terms and conditions (collectively, "Standard Terms"); Purchasers of this part are entitled to the rights and benefits contained therein. For a full statement of the Standard Terms and the exclusive rights and remedies thereunder, please visit Mini-Circuit's website at www.minicircuits.com/MCLStore/terms.jsp.

REV. B
M108294
EDR-6285/3
ZX60-8008E+
RAV
091015
page 1 of 2

Typical Performance Data & Curves at 25°C

ZX60-8008E+

FREQUENCY (MHz)	GAIN (dB)	DIRECTIVITY (dB)	VSWR IN (:1)	VSWR OUT (:1)	POWER OUT @1dB COMPRESSION (dBm)	IP3 (dBm)	NF (dB)
20	11.39	5.54	1.40	1.64	10.42	26.63	4.46
50	11.45	5.46	1.36	1.60	10.44	26.61	4.42
100	11.46	5.42	1.36	1.60	10.46	26.58	4.36
500	11.26	5.75	1.34	1.58	10.52	26.36	4.07
1000	11.03	6.10	1.30	1.57	10.46	26.12	4.00
1550	10.65	6.68	1.25	1.57	10.35	25.90	4.04
2000	10.35	7.01	1.19	1.55	10.28	25.73	4.09
2275	10.28	7.10	1.17	1.53	10.25	25.63	4.10
3000	9.85	7.79	1.08	1.48	10.24	25.33	4.09
3500	9.33	8.48	1.09	1.49	10.24	25.08	4.06
3750	9.39	8.34	1.13	1.50	10.24	24.94	4.05
4000	8.83	8.72	1.20	1.48	10.22	24.79	4.04
4500	8.95	8.46	1.35	1.50	10.13	24.42	4.05
5000	8.87	8.50	1.44	1.52	9.96	23.98	4.10
5500	8.47	9.03	1.58	1.62	9.67	23.43	4.19
6000	8.28	9.14	1.67	1.75	9.28	22.76	4.29
6500	8.10	9.41	1.74	1.92	8.78	21.96	4.40
7000	7.90	10.03	1.79	2.12	8.20	21.01	4.51
7500	7.38	10.64	1.86	2.34	7.57	19.89	4.67
8000	6.69	11.47	1.97	2.55	6.90	18.59	4.97



For detailed performance specs & shopping online see web site

P.O. Box 350166, Brooklyn, New York 11235-0003 (718) 934-4500 Fax (718) 332-4661 The Design Engineers Search Engine Provides ACTUAL Data Instantly at minicircuits.com

IF/RF MICROWAVE COMPONENTS

Notes: 1. Performance and quality attributes and conditions not expressly stated in this specification sheet are intended to be excluded and do not form a part of this specification sheet. 2. Electrical specifications and performance data contained herein are based on Mini-Circuit's applicable established test performance criteria and measurement instructions. 3. The parts covered by this specification sheet are subject to Mini-Circuits standard limited warranty and terms and conditions (collectively, "Standard Terms"); Purchasers of this part are entitled to the rights and benefits contained therein. For a full statement of the Standard Terms and the exclusive rights and remedies thereunder, please visit Mini-Circuits' website at www.minicircuits.com/MCLStore/terms.jsp.