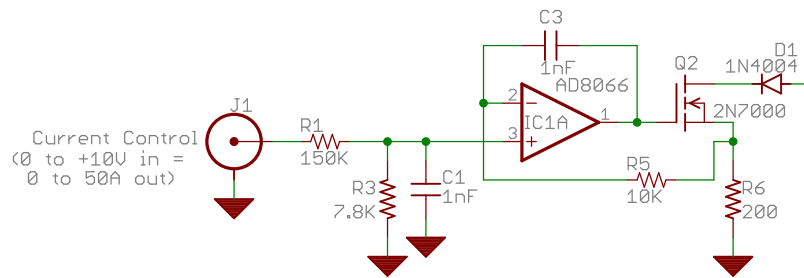
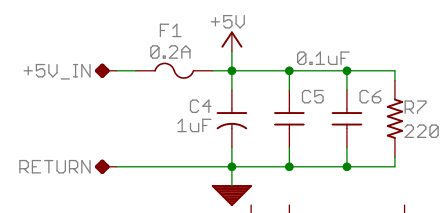
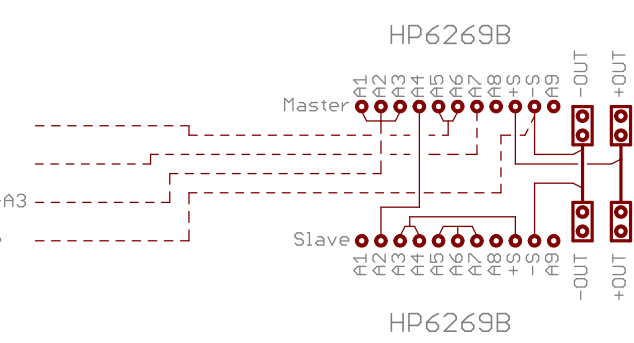
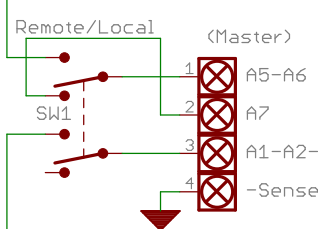
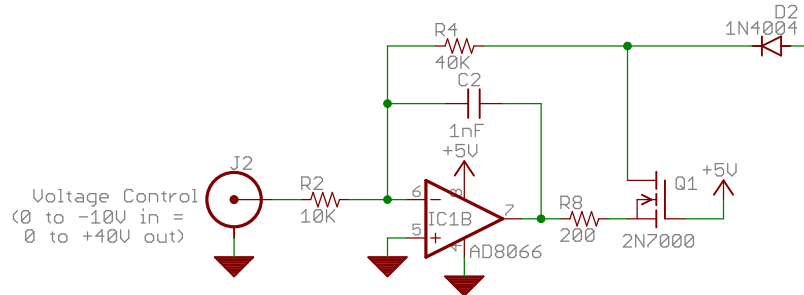


Remote Current Control



Remote Voltage Control



Notes:

- 1) Supplies are paralled as shown. Be sure to ground and sense exactly as shown.
- 2) Use front panel voltage pots on master supply to limit voltage.
- 3) Front panel current pots on master scale remote current setting, from 0% to 100%.
- 4) To disable the remote voltage control, set it higher than the front panel pot.
- 5) HP6269B Calibration: Set voltage above zero, set current to zero, on back adjust "Current Prog." (R116) until voltage slowly rises above zero.

B	Sept10'04	A.Stummer	Add limiting resistor to CV FET source.
Ltr	Date	By	Description
REVISIONS			
University of Toronto Quantum Optics Group			HP6269B Remote Control
Drawn: A.Stummer May'04			J.Thywissen Lab
Edited: 10/09/2004 14:06:02			Sheet: 1/1
			REV: A