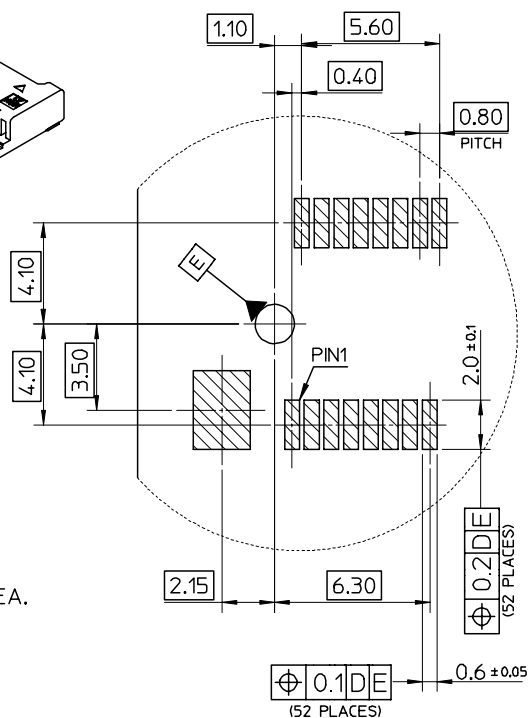
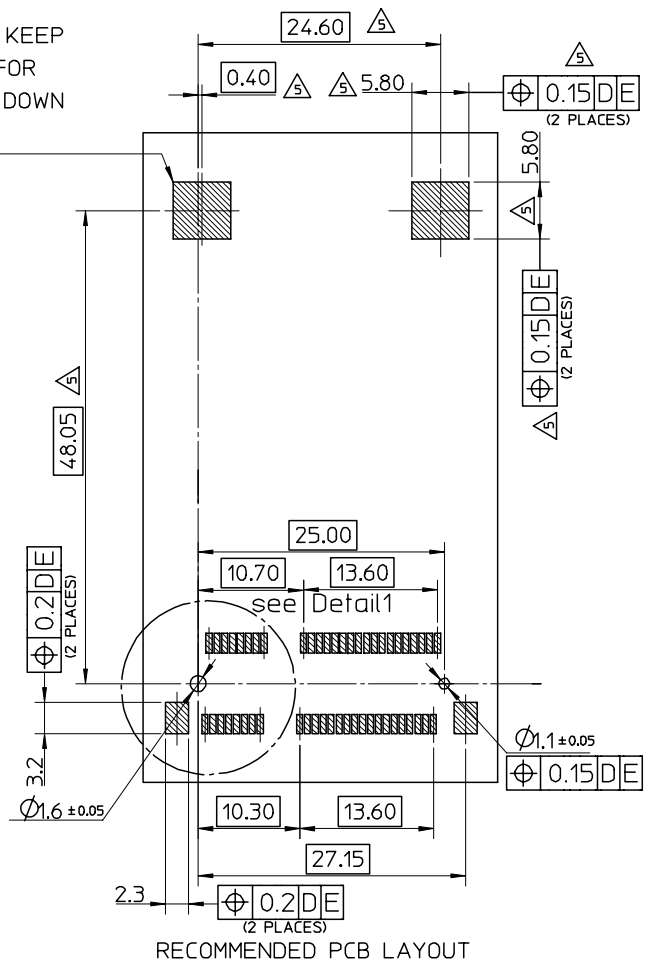


NOTES:

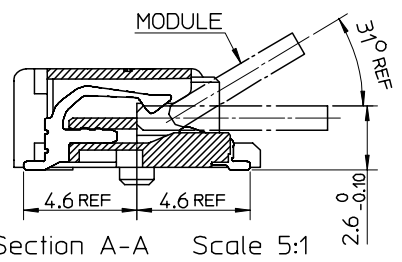
- MATERIALS:
HOUSING:LCP,COLOR:BLACK, UL94V-0.
CONTACT: PHOSPHOR BRONZE NAIL:BRASS
- FINISH
CONTACT:SELECTIVE GOLD IN CONTACT AND SOLDER AREA.
UNDERPLATED:NICKEL OVERALL
NAIL:TIN IN SOLDER AREA.
UNDERPLATED:NICKEL OVERALL.
- THE MODULE CARD REFERENCE MINI PCI EXPRESS CARD
ELECTROMECHANICAL SPECIFICATION.
- DATUM D IS THE TOP SURFACE OF PCB.
- IF THE CONNECTOR USED WITH 48099-00**,LATCH SIDE
RECOMMENDED PCB LAYOUT REFERS TO SD-48099-0**.
- PART 67910**** COMPLIANT TO ROHS DIRECTIVE 2002/95/EC
AND ELV DIRECTIVE 2000/53/EC.



COMPONENT KEEP OUT AREA FOR CARD HOLD DOWN SOLUTION



| | |
|-----------|-------------------|
| 679100002 | 10 MICROINCH GOLD |
| 679101002 | GOLD FLASH |



| RELEASED EC NO: SH2007-0020 2006/08/02 DRWN:DHU CHKD:HARVEY 2006/08/02 APPR: INCHEM 2006/08/09 | DESCRIPTION | QUALITY SYMBOLS | GENERAL TOLERANCES (UNLESS SPECIFIED) | DIMENSION STYLE | SCALE | DESIGN UNITS | THIRD ANGLE PROJECTION | | | | | | | | | | | | | |
|---|-------------|--|---|---|-------|---|------------------------|-------|-------|----------|-------|-------|----------|--------|-------|---------|--------|-------|---------|-----|
| | | $\nabla=0$ $\sphericalangle=0$ | <table border="1"> <thead> <tr> <th></th> <th>mm</th> <th>INCH</th> </tr> </thead> <tbody> <tr> <td>4 PLACES</td> <td>± ---</td> <td>± ---</td> </tr> <tr> <td>3 PLACES</td> <td>± ---</td> <td>± ---</td> </tr> <tr> <td>2 PLACES</td> <td>± 0.25</td> <td>± ---</td> </tr> <tr> <td>1 PLACE</td> <td>± 0.25</td> <td>± ---</td> </tr> </tbody> </table> | | mm | INCH | 4 PLACES | ± --- | ± --- | 3 PLACES | ± --- | ± --- | 2 PLACES | ± 0.25 | ± --- | 1 PLACE | ± 0.25 | ± --- | MM ONLY | 2:1 |
| | mm | INCH | | | | | | | | | | | | | | | | | | |
| 4 PLACES | ± --- | ± --- | | | | | | | | | | | | | | | | | | |
| 3 PLACES | ± --- | ± --- | | | | | | | | | | | | | | | | | | |
| 2 PLACES | ± 0.25 | ± --- | | | | | | | | | | | | | | | | | | |
| 1 PLACE | ± 0.25 | ± --- | | | | | | | | | | | | | | | | | | |
| REV | | DRAFT WHERE APPLICABLE MUST REMAIN WITHIN DIMENSIONS | SEE TABLE | DRAWN BY DATE J. CHIANG 2003/02/25 | | TITLE MINI PCI EXPRESS CONN. 0.8 MM PITCH 52CIRCUIT 4.0MM H | | | | | | | | | | | | | | |
| | | | | CHECKED BY DATE C. WILSON 2003/03/06 | | MOLEX INCORPORATED | | | | | | | | | | | | | | |
| | | | | APPROVED BY DATE L. ERICK 2003/03/06 | | DOCUMENT NO. SD-67910-001 | | | | | | | | | | | | | | |
| | | | | MATERIAL NO. | | SHEET NO. 1 OF 2 | | | | | | | | | | | | | | |
| | | | | SIZE A3 | | THIS DRAWING CONTAINS INFORMATION THAT IS PROPRIETARY TO MOLEX INCORPORATED AND SHOULD NOT BE USED WITHOUT WRITTEN PERMISSION | | | | | | | | | | | | | | |

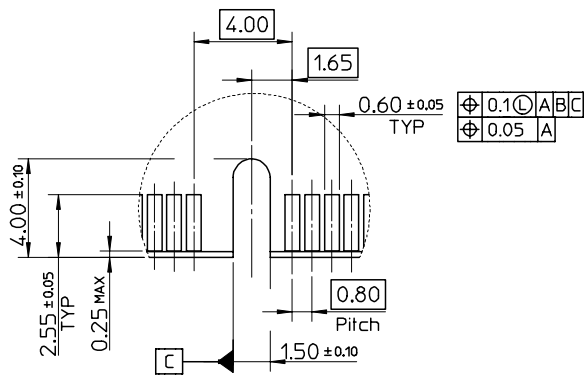
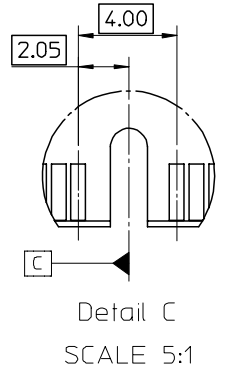
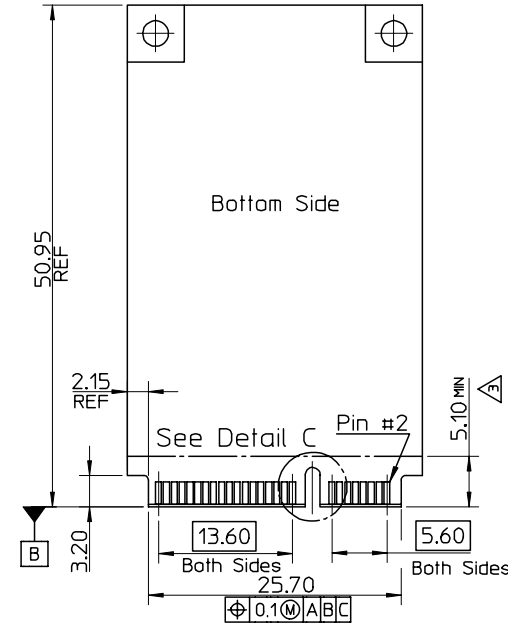
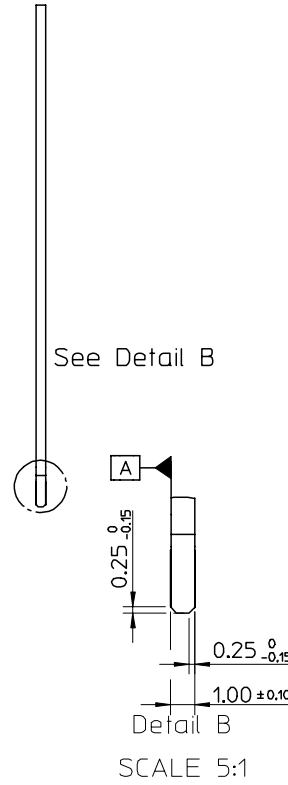
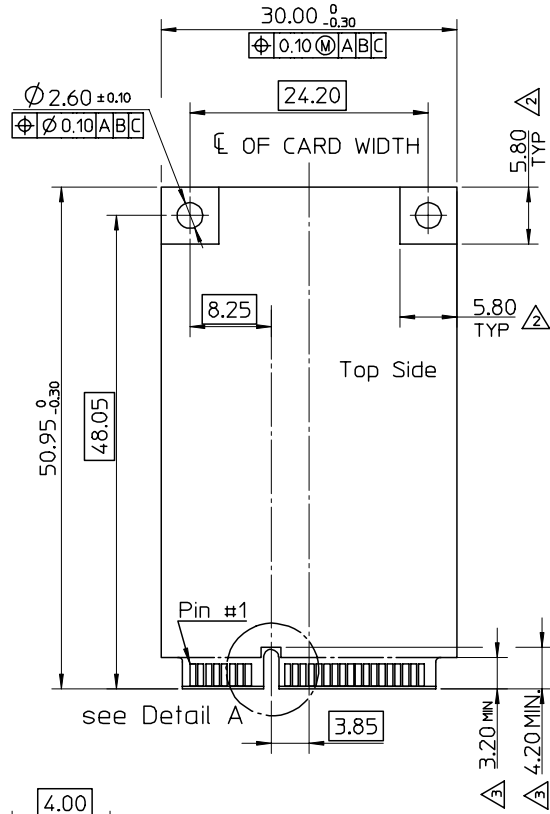
10 9 8 7 6 5 4 3 2 1

NOTES;

1. PIN NUMBERING REFERENCE:

ODD PINS - TOP SIDE
EVEN PINS - BOTTOM SIDE

- △ COMPONENT AND ROUTING (ALL LAYERS)
KEEP OUT AREA FOR HOLD DOWN SOLUTIONS.
- △ COMPONENT KEEP OUT AREA FOR CONNECTOR.



Detail A
Scale 5:1

| | | | | | | | |
|---|-------------------------------|---|---|----------------------------|---------------------------------------|------------------------|-------------------------------------|
| RELEASED EC NO: SH2007-0020 2006/08/02 DRWN:DHU CHKD:HARVEY 2006/08/02 APPR: JNCHEM 2006/08/09 | QUALITY SYMBOLS ▽=0 △=0 | GENERAL TOLERANCES (UNLESS SPECIFIED) | | DIMENSION STYLE MM ONLY | SCALE 1:1 | DESIGN UNITS METRIC | THIRD ANGLE PROJECTION |
| | | 4 PLACES ± --- ± --- | 3 PLACES ± --- ± --- | 2 PLACES ± 0.25 ± --- | 1 PLACE ± 0.25 ± --- | ANGULAR ± 3 ° | DRAWN BY J. CHIANG 2003/02/25 |
| REV C | DESCRIPTION | DRAFT WHERE APPLICABLE MUST REMAIN WITHIN DIMENSIONS | | SEE TABLE | APPROVED BY L. ERICK 2003/03/06 | DATE 2003/03/06 | MOLEX INCORPORATED |
| | | SIZE A3 | THIS DRAWING CONTAINS INFORMATION THAT IS PROPRIETARY TO MOLEX INCORPORATED AND SHOULD NOT BE USED WITHOUT WRITTEN PERMISSION | | DOCUMENT NO. SD-67910-001 | SHEET NO. 2 OF 2 | |

9 8 7 6 5 4 3 2 1