

PART NUMBER CODING

SBH41-NBPB-D -SP-

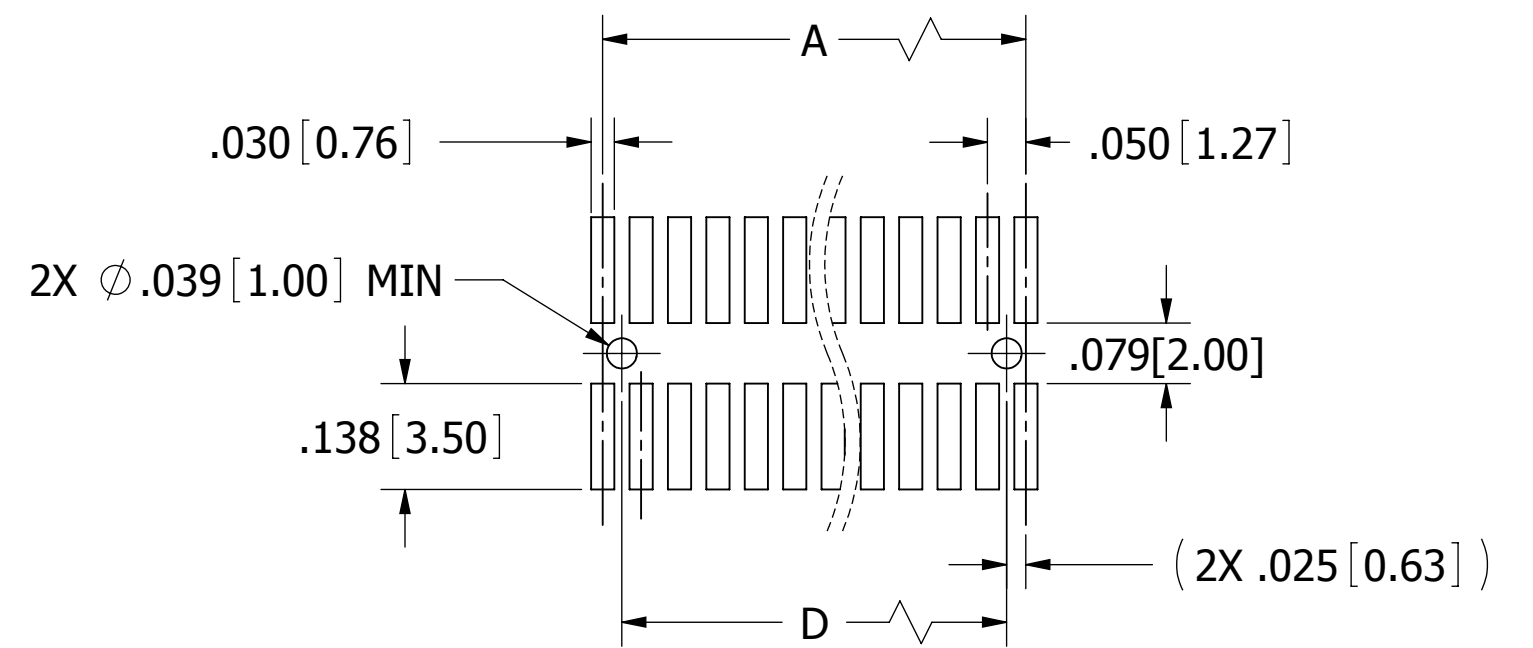
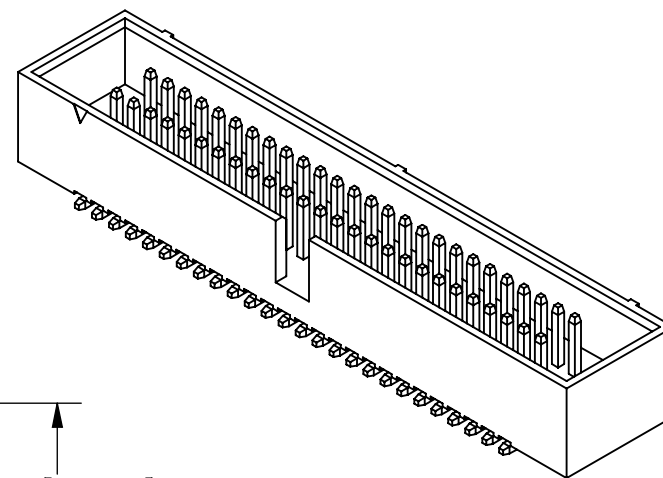
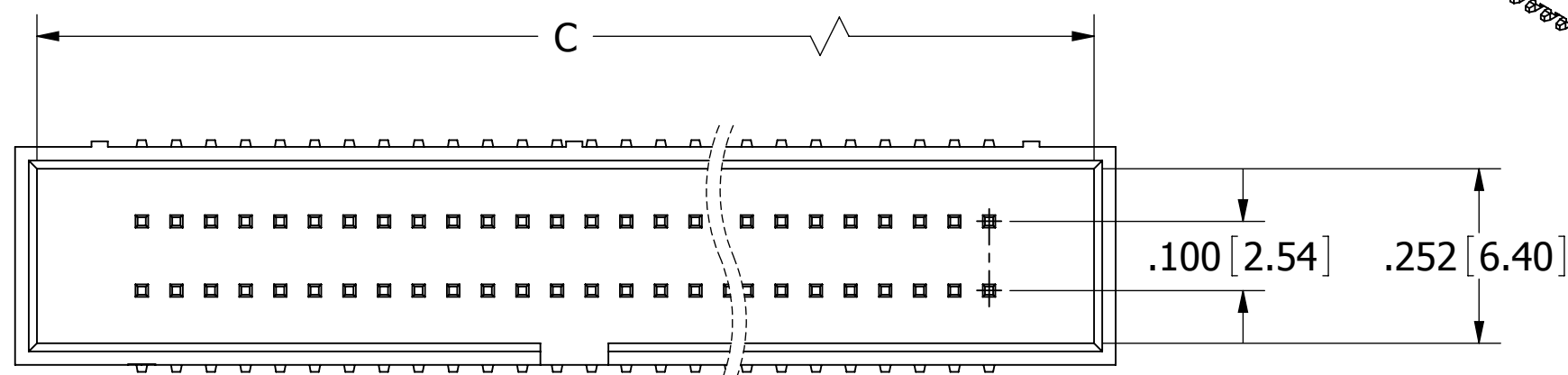
NUMBER OF POSITIONS
(CONTACTS PER ROW)

COLOR

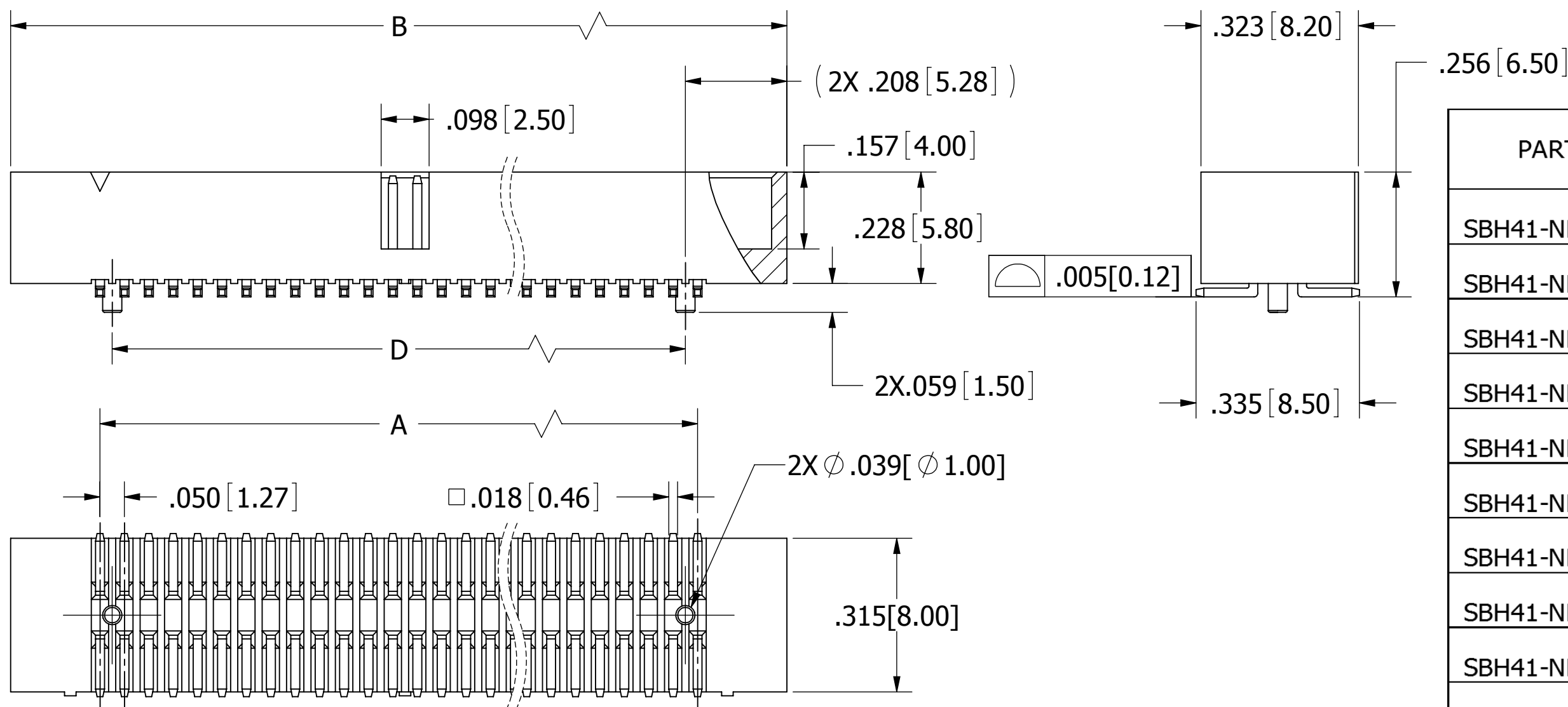
- BK= BLACK
- YE= YELLOW
- RE= RED
- BL= BLUE
- GR= GREEN
- GY= GREY
- WH= WHITE
- OR= ORANGE

TERMINATION

SURFACE MOUNT W/PEGS



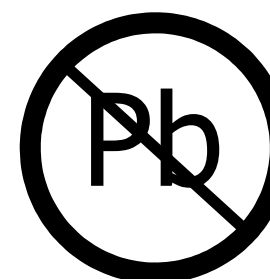
RECOMMENDED PCB LAYOUT



PART NUMBER	POSITIONS/ CONTACTS	A		B		C		D	
		INCH	MM	INCH	MM	INCH	MM	INCH	MM
SBH41-NBPB-D05-SP-__	05/10	0.200	5.08	0.566	14.38	0.503	12.78	0.150	3.81
SBH41-NBPB-D07-SP-__	07/14	0.300	7.62	0.666	16.92	0.603	15.32	0.250	6.35
SBH41-NBPB-D08-SP-__	08/16	0.350	8.89	0.716	18.19	0.653	16.59	0.300	7.62
SBH41-NBPB-D10-SP-__	10/20	0.450	11.43	0.816	20.73	0.753	19.13	0.400	10.16
SBH41-NBPB-D13-SP-__	13/26	0.600	15.24	0.966	24.54	0.903	22.94	0.550	13.97
SBH41-NBPB-D15-SP-__	15/30	0.700	17.78	1.066	27.08	1.003	25.48	0.650	16.51
SBH41-NBPB-D17-SP-__	17/34	0.800	20.32	1.166	29.62	1.103	28.02	0.750	19.05
SBH41-NBPB-D20-SP-__	20/40	0.950	24.13	1.316	33.43	1.253	31.83	0.900	22.86
SBH41-NBPB-D25-SP-__	25/50	1.200	30.48	1.566	39.78	1.503	38.18	1.150	29.21
SBH41-NBPB-D30-SP-__	30/60	1.450	36.83	1.816	46.13	1.753	44.53	1.400	35.56
SBH41-NBPB-D34-SP-__	34/68	1.650	41.91	2.016	51.21	1.953	49.61	1.600	40.64
SBH41-NBPB-D40-SP-__	40/80	1.950	49.53	2.316	58.83	2.253	57.23	1.900	48.26
SBH41-NBPB-D50-SP-__	50/100	2.450	62.23	2.816	71.53	2.753	69.93	2.400	60.96

NOTES:

1. INSULATOR MATERIAL: NYLON 6T, UL 94V-0, COLOR: SEE PART NUMBER CODING.
2. CONTACT MATERIAL: BRASS.
3. CONTACT PLATING: GOLD FLASH OVERALL.
4. CURRENT RATING: 1 AMP PER CONTACT.
5. INSULATOR RESISTANCE: 1000 MEGOHMS MIN.
6. CONTACT RESISTANCE: 20 MILLIOHMS MAX.
7. DIELECTRIC WITHSTANDING: 500 V AC.
8. OPERATING TEMPERATURE: -40° C TO + 85° C.
9. *PROCESSING TEMP.: 230° C FOR 60 SECONDS MAX. (260° C, 10 SEC.)
10. MATES WITH SFH41 & SFH413 IDC SOCKET SERIES.



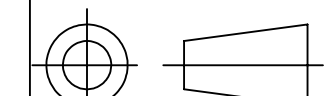
RoHS COMPLIANT

UNLESS OTHERWISE SPECIFIED:
DIMENSIONS ARE IN INCHES(MM)

TOLERANCES:
ANGULAR: ± 30°
.XX= ± .012 [.30]
.XXX= ± .008 [.20]
.XXXX= ± .004 [.10]
SURFACE FINISH: 63 R_a
REMOVE ALL BURRS AND SHARP EDGES .010 MAX

INTERPRET DIMENSIONS AND GEOMETRIC TOLERANCING PER: ANSI Y14.5M-1994

DATE	NAME
DRAWN 01/28/2010	LH



SULLINS
CONNECTOR SOLUTIONS

DESCRIPTION
BOX HEADER, .050[1.27] CC, .100[2.54] RS

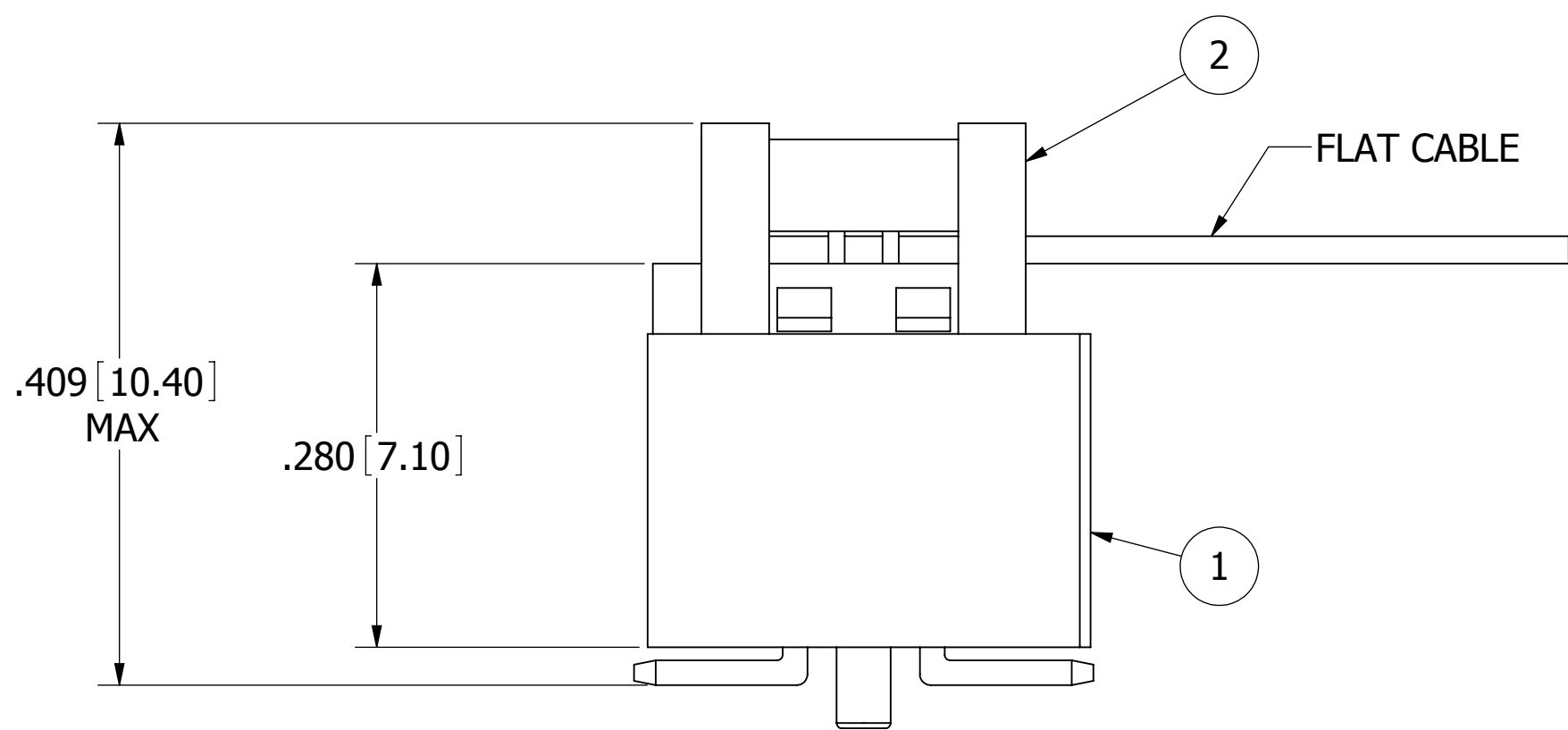
PART NUMBER
SBH41-NBPB-D -SP-__

SIZE	DWG. NO.	REV
C	11107	D

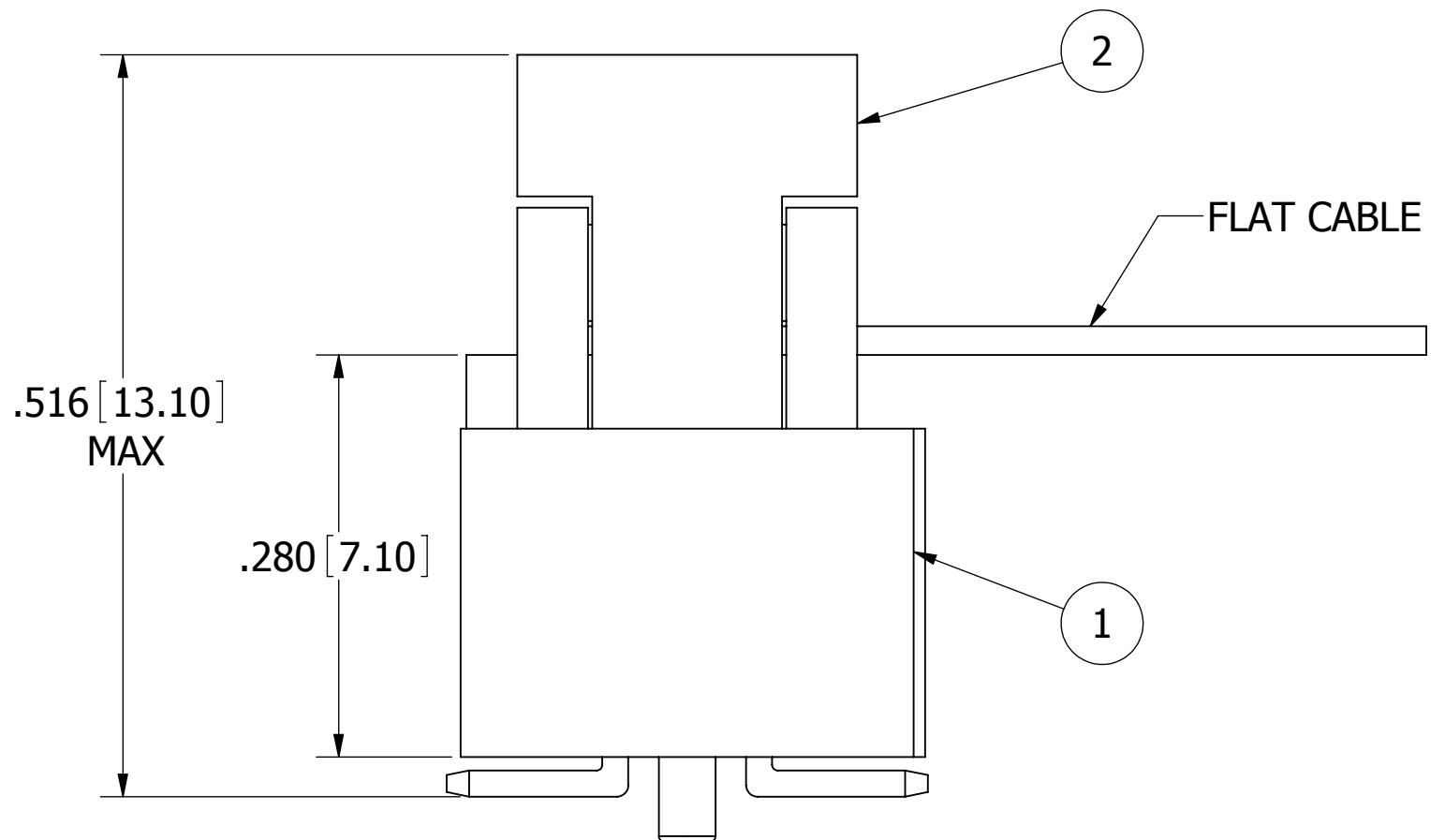
SCALE: 4:1 SHEET 1 OF 2

8 7 6 5 4 3 2 1

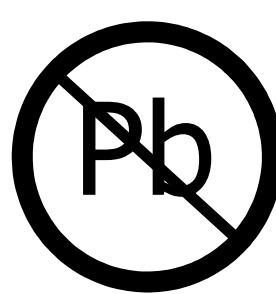
F
E
D
C
B
A



ITEM 1	SBH41-NBPB-D__-SP-__
ITEM 2 (MATE)	SFH41-PP_B-D__-ID-__



ITEM 1	SBH41-NBPB-D__-SP-__
ITEM 2 (MATE)	SFH413-PP_B-D__-ID-__



RoHS COMPLIANT

UNLESS OTHERWISE SPECIFIED:
 DIMENSIONS ARE IN INCHES[MM]
 TOLERANCES:
 ANGULAR: ± 30'
 .XX=± .012 [.30]
 .XXX=± .008 [.20]
 .XXXX=± .004 [.10]

INTERPRET DIMENSIONS AND GEOMETRIC
 TOLERANCING
 PER: ANSI Y14.5M-1994

DRAWN	DATE	NAME
LH	01/28/2010	LH
THE INFORMATION HEREIN CONTAINS PROPRIETARY INFORMATION OF SULLINS ELECTRONICS AND IS NOT TO BE REPRODUCED, USED OR DISCLOSED TO OTHERS FOR ANY PURPOSE EXCEPT AS SPECIFICALLY AUTHORIZED IN WRITING BY AN OFFICER OF SULLINS ELECTRONICS.		

DESCRIPTION BOX HEADER, .050[1.27] CC, .100[2.54] RS	
PART NUMBER SBH41-NBPB-D__-SP-__	
SIZE	REV
C	D
DWG. NO.	SCALE: 4:1
11107	SHEET 2 OF 2