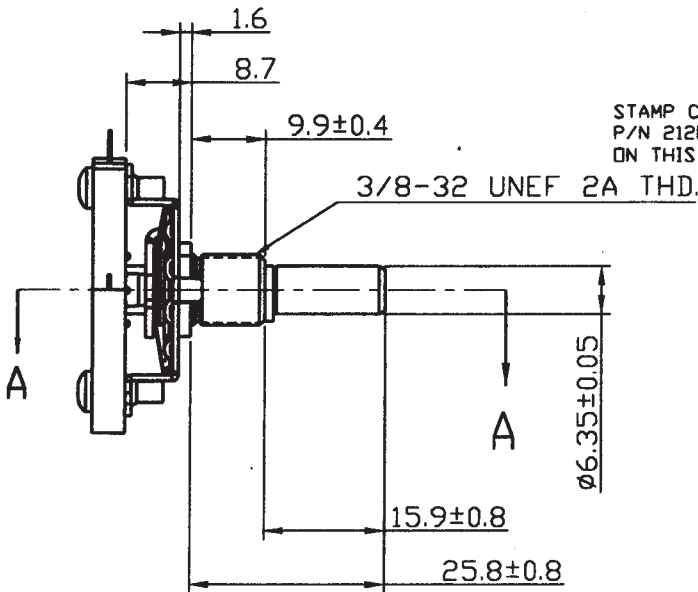
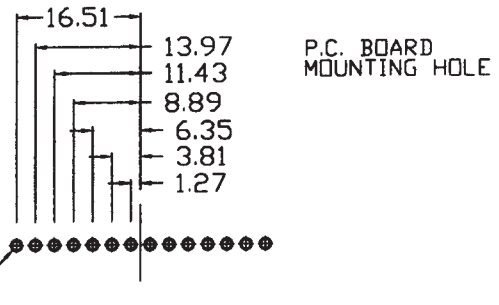
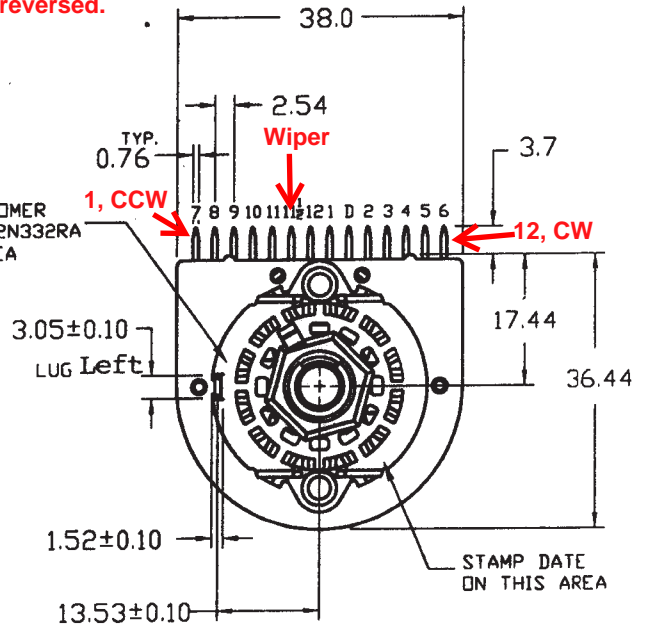


What are they talking about? Those pin numbers are all wrong!
 With CCW being position 1, counting from furthest right pin (shown here as "7"), pins are:
 1, 2, 3, 4, 5, Wiper, 6, 7, unknown, 8, 9, 10, 11, 12.
 Note that "7" and "unknown" may be reversed.
 Alan Stummer, 2017 Aug



STAMP CUSTOMER
 P/N 212P0112N332RA
 ON THIS AREA



| POSITION | CHECK BETWEEN TERMINALS | OPEN | CLOSED | POSITION | CHECK BETWEEN TERMINALS | OPEN | CLOSED |
|----------|-------------------------|------|--------|----------|-------------------------|------|--------|
| 11 | 11 $\frac{1}{2}$ - 5 | X | | | | | |
| 10 | 11 $\frac{1}{2}$ - 4 | X | | | | | |
| 9 | 11 $\frac{1}{2}$ - 3 | X | | | | | |
| 8 | 11 $\frac{1}{2}$ - 2 | X | | | | | |
| 7 | 11 $\frac{1}{2}$ - 1 | X | | | | | |
| 6 | 11 $\frac{1}{2}$ - 12 | X | | | | | |
| 5 | 11 $\frac{1}{2}$ - 11 | X | | | | | |
| 4 | 11 $\frac{1}{2}$ - 10 | X | | | | | |
| 3 | 11 $\frac{1}{2}$ - 9 | X | | | | | |
| | 11 $\frac{1}{2}$ - 8 | X | | | | | |
| 2 | 11 $\frac{1}{2}$ - 7 | X | | | | | |
| | 11 $\frac{1}{2}$ - AD | X | | | | | |
| 1 | 11 $\frac{1}{2}$ - 7 | X | | 12 | 11 $\frac{1}{2}$ - 6 | | X |
| POSITION | CHECK BETWEEN TERMINALS | OPEN | CLOSED | POSITION | CHECK BETWEEN TERMINALS | OPEN | CLOSED |

CIRCUIT CONNECTIONS

NOTES :

- PRINT IS ACCORDING TO JIT SUPPLY P/N 212P0112N332RA
- LOCK WASHER & MOUNTING NUT MUST BE SHIPPED SEPARATELY (UNASSEMBLED) FROM SELECTOR SWITCH
 LOCKWASHER P/N 1220A
 MOUNTING NUT P/N 45T-3
 ADJUST STOP P/N 215-33-003-01-53
- STOPS MUST BE LOCATED ON POSITION 11 ONLY
- WAFER CONFORM TO 212-95-P02-00-00
- FOR ADDITIONAL REQUIREMENTS SEE CTS ENG.
 SPEC #EN-SPE-212001

UNIT : MM

CTS COMPONENTS TAIWAN LTD.
 KAOHSIUNG, TAIWAN, ROC

CAD LIST : ACAD(A)-RDC-227
 FILE NAME : BM06042

| | | | | |
|------------|----------------|--|---------------|-------------|
| PART NO. | 212P0112N332RA | REV | CUSTOMER : | DIGI-KEY |
| SCALE : | N/A | TOLERANCE UNLESS OTHERWISE SPECIFIED | DRAWN BY : | C.E.Chen |
| CTS TYPE : | 212-T212-1 | .X (1 PLACE) : ± 0.2 .XX (2 PLACE) : ± 0.05 ANGLE : ± 1.0° | CHECKED BY : | [Signature] |
| | | | APPROVED BY : | [Signature] |
| | | | ISSUED DATE : | 08/15/06 |

CTS COMPONENTS TAIWAN, LTD.

| | | |
|---|-------------------|----------------------------|
| ENGINEERING SPECIFICATION | | SPEC NO. EN-SPE-212001A |
| SPECIFICATION : 212 SERIES SELECTOR SWITCH | DATE 03-19-02' | PAGE OF 1 OF 2 |

1.0 GENERAL :

- 1.0 THIS SPECIFICATION APPLIES TO THE SELECTOR SWITCH 212 SERIES
(ROTARY TYPE) STANDARD AND CUSTOMER CONFIGURATION
- 1.1 OPERATING TEMPERATURE RANGE : -20 °C TO +110 °C
- 1.2 STORAGE TEMPERATURE RANGE : -20 °C TO +110 °C

2.0 MECHANICAL CHARACTERISTICS :

- 2.1 INDEXING : DOUBLE BUMP SPRING HILL AND VALLEY DETENT WITH 30°
INDEXING FOR 2 THROUGH 12 POSITIONS OR CONTINUOUS ROTATION
- 2.2 DETENT ROTATIONAL LIFE : 25,000 CYCLES THRU 12 POSITIONS AND RETURN
AT 10 CYCLES PER MINUTE

TORQUE : AS REQUIRED UP TO 48 inch. oz (3.4 kg-cm)

- 2.3 STOP STRENGTH :
STANDARD : 15 inch-lbs (17 kg-cm)

2.4 MATERIAL :

SHAFT :

- ALUM BRASS BRASS WITH NI-PLATED
- BRASS WITH ZINC PLATED _____

BUSHING :

- BRASS WITH NI-PLATED BRASS WITH ZINC PLATED
- BRASS _____

DETENT SPRING : STAINLESS STEELS ,OR SPRING BRASS DEPENDING ON TORQUE REQUIREMENT.

DETENT PLATE : STEEL

CONTACT : SILVER PLATED PHOSOPHER BRONZE

TERMINAL : SILVER PLATED BRASS STANDARD

STATOR : GLASS REINFORCED PPA UL FLAME CLASS 94V-0

ROTOR AND ROTOR COVER : NYLON 66 UL FLAME CLASS 94V-2

| | | | | | | | |
|-----|----------------|----------|----|-----|----------|------|----|
| A | ITEM 4.0 ADDED | 08-02-05 | SM | | | | |
| 0 | RELEASED | 03-19-02 | ML | | | | |
| SYM | REVISION | DATE | BY | SYM | REVISION | DATE | BY |

WRITTEN BY : S.M.TSAI
REVIEWED BY : H.Y.LIN
APPROVED BY : T.J.LEE

CUSTOMER : GENERAL
DISTRIBUTION :

CTS COMPONENTS TAIWAN, LTD.

| | | |
|---|-------------------|----------------------------|
| ENGINEERING SPECIFICATION | | SPEC NO. EN-SPE-212001A |
| SPECIFICATION : 212 SERIES SELECTOR SWITCH | DATE 03-19-02' | PAGE OF 2 OF 2 |

3.0 ELECTRICAL CHARACTERISTICS :

3.1 CONTACT RESISTANCE : 0.015 OHMS MAX MEASURED FROM ONE TERMINAL TO AN ADJACENT TERMINAL. (WHEN IS NOT ADJACENT, UP TO 180° APART, WILL MEASURE MUCH HIGHER DUE TO THE EXTRA METAL IN THE CIRCUIT) . THE CIRCUIT RESISTANCE CHECK MEASURE ALL THE METAL IN THE CIRCUIT.

3.2 CONTACT LIFE : ROTATION THROUGH 12 POSITIONS AND RETURN WITHOUT APPRECIABLE RISE IN CONTACT RESISTANCE
UNLOADED : 50,000 CYCLES
LOADED (RESISTIVE) : 10,000 CYCLES

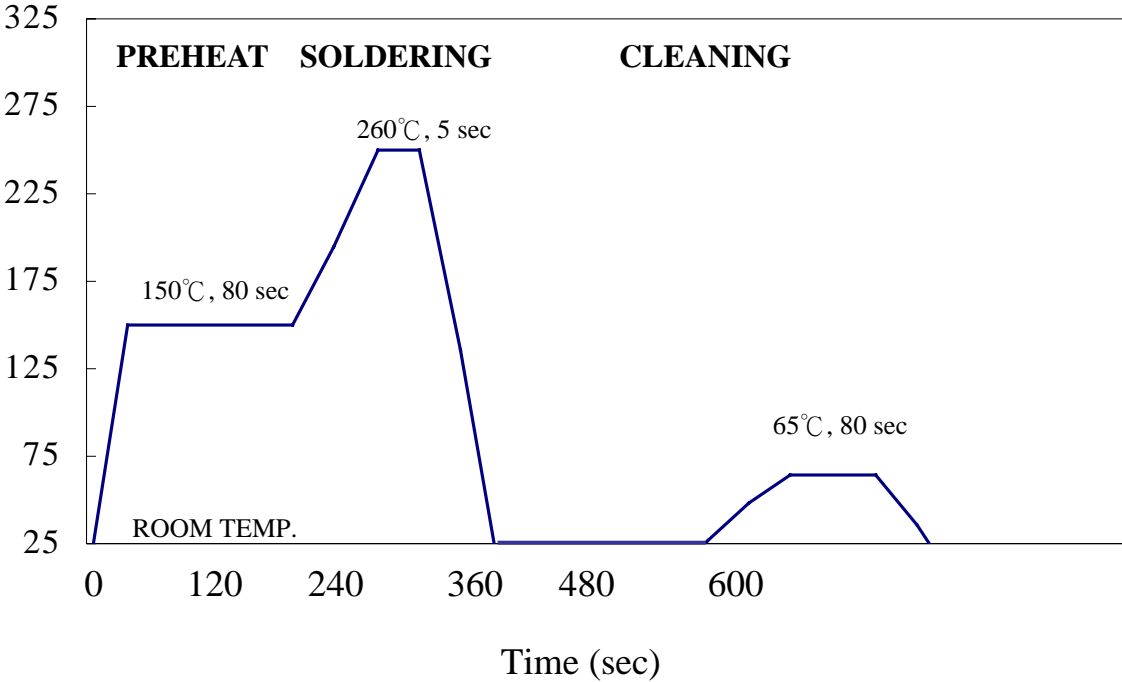
3.3 RATING :
¾ AMP @ 125 VAC
¼ AMP @ 250 VDC (SHORTING TYPE ONLY)
½ AMP @ 125 VDC (SHORTING TYPE ONLY)
¼ AMP @ 28 VDC (SPECIAL RATING)

3.4 HI POT TEST :
BETWEEN ADJACENT 15 DEG. CIRCUITS : 750 VAC RMS FOR 1 MINUTE
BETWEEN GROUND AND NEAREST TERMINAL : 1500 VAC FOR 1 MINUTE
THE TEST VOLTAGE SHALL BE APPLIED BETWEEN ALL EVEN-NUMBERED CONTACTS TIED TOGETHER AND ALL ODD-NUMBERED CONTACTS TIED TOGETHER AND BETWEEN EACH OF THIS GROUP AND THE SWITCH FRAME FOR EACH SWITCH.

4.0 RoHS COMPLIANCE : THIS PART IS COMPLIANT WITH EU RoHS DIRECTIVE.

| SYM | REVISION | DATE | BY | SYM | REVISION | DATE | BY |
|-----------------------|----------|------|----|--------------------|----------|------|----|
| WRITTEN BY : S.M.TSAI | | | | CUSTOMER : GENERAL | | | |
| REVIEWED BY : H.Y.LIN | | | | DISTRIBUTION : | | | |
| APPROVED BY : T.J.LEE | | | | | | | |

212 SOLDERING PROCESS



1. The temperature is referring to PC board, soldering or cleaning water temperature.